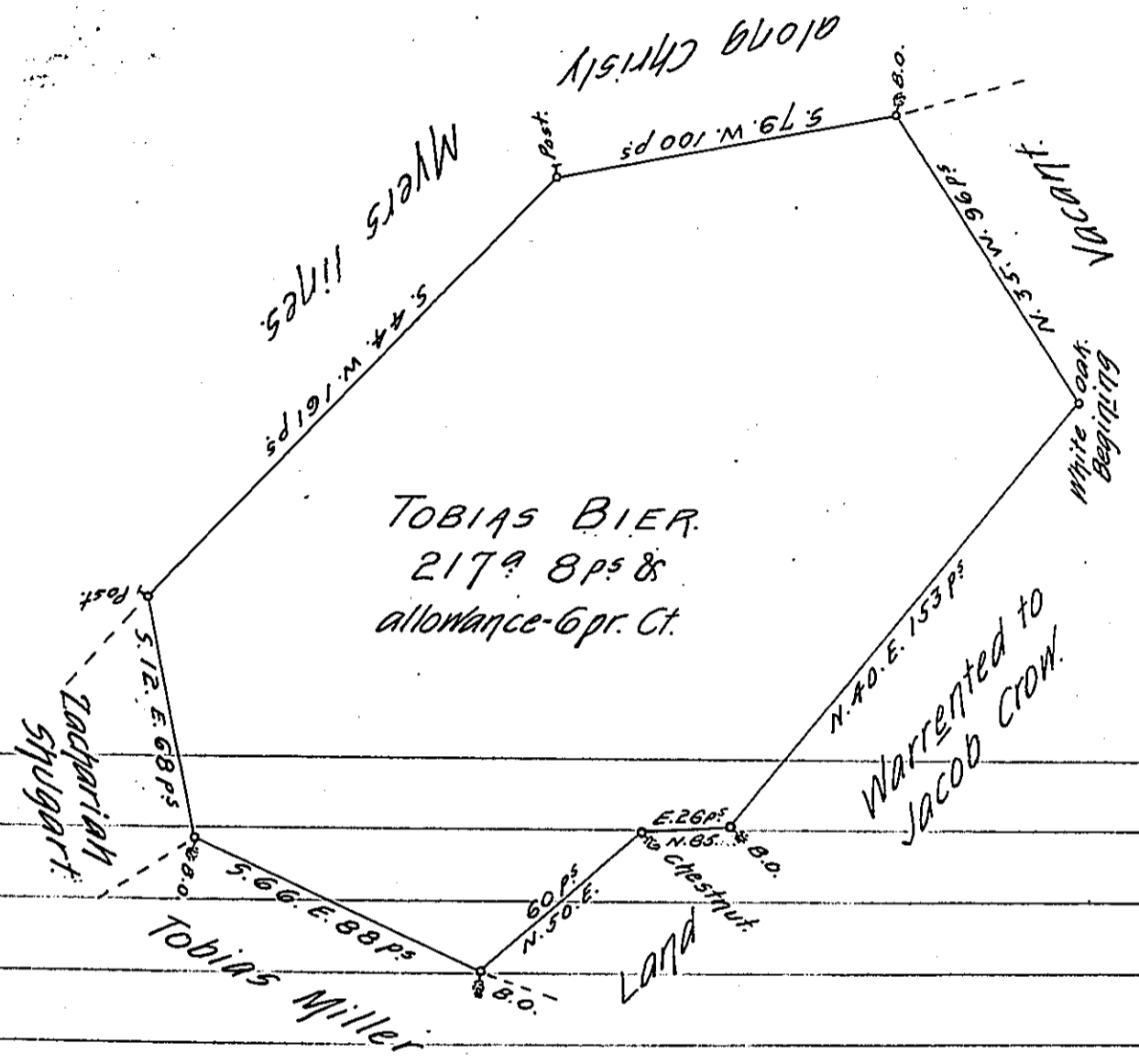


FORM No. 1.

No	Course	Dist.	North, g.	South, g.	East, g.	West, g.
1.	N. 35. W.	96.	78.6			55.1
2.	S. 79. W.	100.		19.1		98.2
3.	S. 44. W.	161.		114.8		111.9
4.	S. 12. E.	68.		66.5	14.1	
5.	S. 66. E.	88.		35.8	80.4	
6.	N. 50. E.	60.	38.0		46.0	
7.	N. 85. E.	26.	2.3		25.9	
8.	N. 40. E.	153.	117.2		98.4	
			236.1	236.2	264.8	265.2



A Draught of a tract of Land situate in Shrewsberry township, York County, surveyed to Tobias Bier, Assignee of Abraham Keener in pursuance of a Warrant from the Honourable Proprietaries for 200^a dated September 23^d 1762 surveyed the 16th of 11th mo 1764.

Pr. W^m Matthews. - -

To John Luhens, - Surveyor Gen^l.

IN TESTIMONY that the above is a copy of the original remaining on file in the Department of Internal Affairs of Pennsylvania, made conformably to an Act of Assembly approved the 16th day of February, 1833, I have hereunto set my Hand and caused the Seal of said Department to be affixed at Harrisburg, this twenty-eighth day of August 1905.

Leaac P. Brown
Secretary of Internal Affairs.